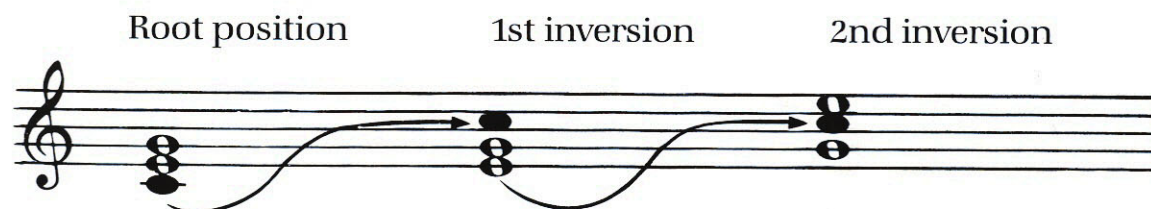
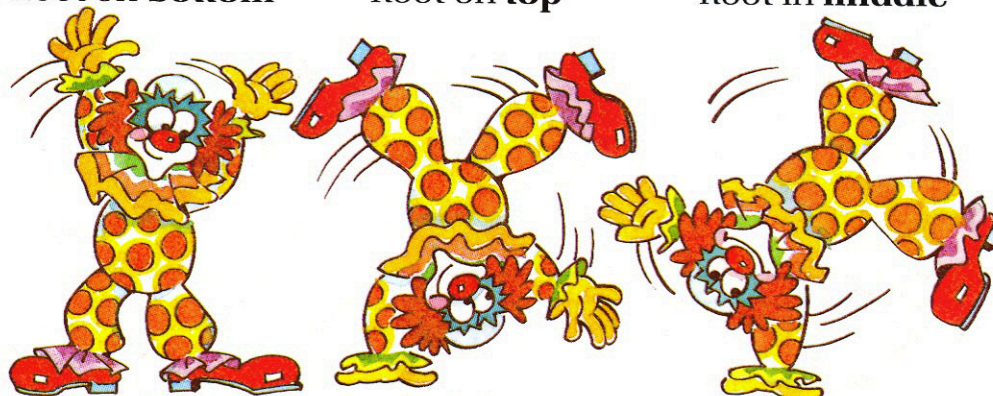


# Triads and Inversions

Any root position triad may be **inverted** (rearranged) by moving the root note to the **top** or **middle**. (**Note:** the root is the **top** note of the 4th in an inversion.)

Root on **bottom**Root on **top**Root in **middle**

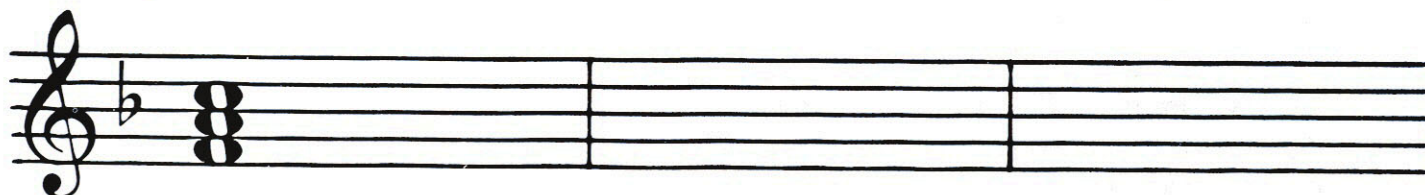
**22.** Draw the notes for the inversions of these triads, then play the chords.

Root position

1st inversion

2nd inversion

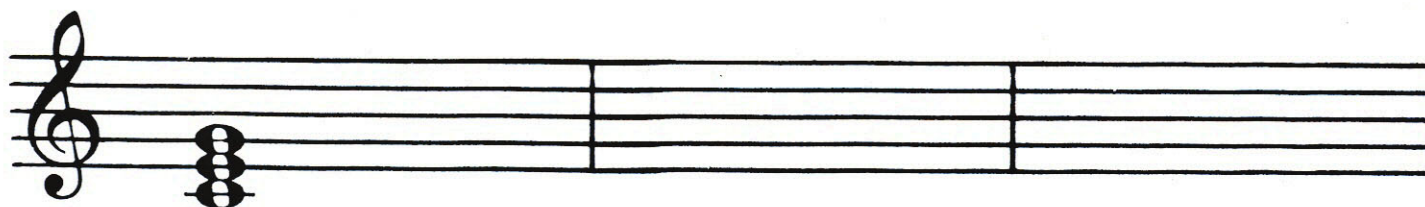
F Major



D minor



C Major



A minor

