

# IMAGE

## 20 Children's Songs for Marimba

Bart Quartier

### Reference guide

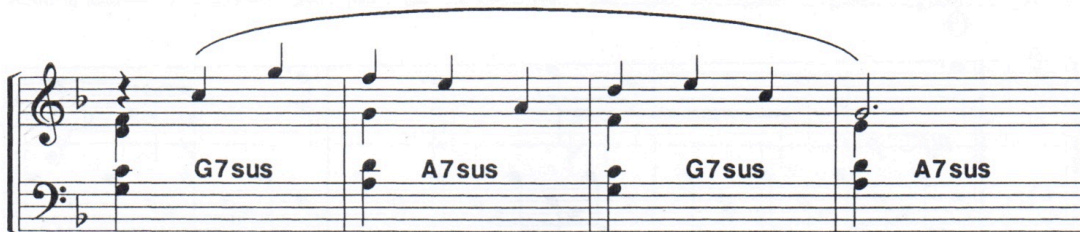
#### 1. From the cradle – Bart Quartier

*Single alternating stroke*



#### 2. Cat-nap – Bart Quartier

*Chord Symbols*



#### 3. Stepping stone – Bart Quartier

*Octaves*



#### 4. Crocodile tears – Bart Quartier

*Rolls*



**5. Santa Claus** – Bart Quartier

*Seconds*

Musical notation for 'Santa Claus' in treble and bass clefs. The melody is in the treble clef, starting with a dynamic marking of *mp*. The piece consists of four measures of eighth-note patterns.

**6. Slip'n'slide** – Bart Quartier

*Patterns*

Musical notation for 'Slip'n'slide' in treble and bass clefs. The melody is in the treble clef, starting with a dynamic marking of *mf - p*. The piece consists of two measures of eighth-note patterns.

**7. Mobile** – Bart Quartier

*Melody left hand*

Musical notation for 'Mobile' in treble and bass clefs. The melody is in the bass clef, starting with a dynamic marking of *mf - p*. The piece consists of four measures of eighth-note patterns. The treble clef part contains rests.

**8. Out for a walk with granddad** – Bart Quartier

*Double vertical stroke*

Musical notation for 'Out for a walk with granddad' in treble and bass clefs. The melody is in the treble clef, starting with a dynamic marking of *f*. The piece consists of two measures of eighth-note patterns. The bass clef part contains double vertical strokes.

**9. Merry-go-round** – Bart Quartier

*Circular Movement*



**10. Fuzz** – Bart Quartier

*Open - close movement*



**11. Teething** – Bart Quartier

*Pelvis*



**12. Skip** – Bart Quartier

*Forward-backward movement*





**13. Why...? – Bart Quartier**

*Dead stroke*

Musical score for 'Why...?' in 4/4 time. The piece features a 'Dead stroke' technique. The right hand plays a series of chords, with the first six marked with a circled plus sign and the last one with a circled zero. The left hand plays a bass line with triplets and a final note marked with a circled zero. Dynamics include *mp* and *f*. The score ends with a 5/4 time signature change.

**14. Sing-along – Bart Quartier**

*Permutations*

Musical score for 'Sing-along' in 4/4 time. The piece features 'Permutations' of a rhythmic pattern. The right hand plays a melodic line with eighth notes, and the left hand plays a bass line with eighth notes. The dynamics are marked *mf*.

**15. Lullaby – Bart Quartier**

*Overview keyboard*

Musical score for 'Lullaby' in 4/4 time. The piece features an 'Overview keyboard' technique. The right hand plays a melodic line with eighth notes, and the left hand plays a bass line with eighth notes. The dynamics are marked *mf*.

**16. Ice-cream-cone – Bart Quartier**

*Contrary motion*

Musical score for 'Ice-cream-cone' in 4/4 time. The piece features 'Contrary motion'. The right hand plays a melodic line with eighth notes, and the left hand plays a bass line with eighth notes. The dynamics are marked *mf*.



**17. Whoopee** – Bart Quartier

*Paradiddles*



**18. Imitation** – Bart Quartier

*Elbow*



**19. Children's fancy** – Bart Quartier

*Sight-reading*



**20. Music box** – Bart Quartier

*Single independent stroke*

