

Study for Clarinet in Bb and Piano Op. 63 - Part 2

Clarinet in Bb

A3 A7 A11

I

A2

In Gypsy Style

No. 28 Allegretto molto moderato

C. Baermann

Musical score for Clarinet in Bb, Part 1, measures 1-12. The score is written in 2/4 time and features a melodic line with various ornaments and articulations. The key signature has one flat (Bb).

Musical score for Clarinet in Bb, Part 2, measures 13-24. The score continues the melodic line from Part 1. It includes a 4-measure rest at the beginning of the section. The key signature changes to two sharps (D major) for the remainder of the piece. The tempo marking 'Maggiore' is present at the top.

Musical staff 1 of page 3, featuring a treble clef, a key signature of one sharp (F#), and a melody with eighth notes and slurs.

Minore

Musical staff 2 of page 3, featuring a treble clef, a key signature of one flat (Bb), and a melody with eighth notes and slurs.

Musical staff 3 of page 3, featuring a treble clef, a key signature of one flat (Bb), and a melody with eighth notes and slurs.

Musical staff 4 of page 3, featuring a treble clef, a key signature of one flat (Bb), and a melody with eighth notes and slurs. A box above the staff contains the text "A5 A9 A13" and a "4" below it.

Trio

Musical staff 5 of page 3, featuring a treble clef, a key signature of one flat (Bb), and a melody with eighth notes and slurs.

Musical staff 6 of page 3, featuring a treble clef, a key signature of one flat (Bb), and a melody with eighth notes and slurs.

Musical staff 7 of page 3, featuring a treble clef, a key signature of one flat (Bb), and a melody with eighth notes and slurs. First and second endings are marked with "1" and "2" above the staff.

Musical staff 8 of page 3, featuring a treble clef, a key signature of one flat (Bb), and a melody with eighth notes and slurs.

Musical staff 1 of page 4, featuring a treble clef, a key signature of one flat (Bb), and a melody with eighth notes and slurs.

Musical staff 2 of page 4, featuring a treble clef, a key signature of one flat (Bb), and a melody with eighth notes and slurs.

Musical staff 3 of page 4, featuring a treble clef, a key signature of one flat (Bb), and a melody with eighth notes and slurs.

Musical staff 4 of page 4, featuring a treble clef, a key signature of one flat (Bb), and a melody with eighth notes and slurs.

Musical staff 5 of page 4, featuring a treble clef, a key signature of one flat (Bb), and a melody with eighth notes and slurs.

Musical staff 6 of page 4, featuring a treble clef, a key signature of one flat (Bb), and a melody with eighth notes and slurs.

Musical staff 7 of page 4, featuring a treble clef, a key signature of one flat (Bb), and a melody with eighth notes and slurs.

Musical staff 8 of page 4, featuring a treble clef, a key signature of one flat (Bb), and a melody with eighth notes and slurs.

Musical score for page 5, featuring a complex melodic line with many slurs and ties across eight staves. The key signature is one flat (B-flat). The notation includes various rhythmic values and articulation marks.

Musical score for page 6, continuing the melodic line from page 5 across eight staves. The key signature is one flat (B-flat). The notation includes various rhythmic values and articulation marks.

A6 A10 A14 Minore

4

II

A15

A16 A19 A22

No. 31 *Andante molto cantabile*

Musical score for page 7, measures 1-16. The score is written in treble clef with a key signature of two flats (B-flat and E-flat) and a common time signature (C). It features a melodic line with various ornaments and phrasing. Measure 1 has a fermata over a whole note. Measure 2 has a '2' above a pair of eighth notes. Measure 10 has a '2' above a pair of eighth notes. Measure 14 has a '3' below a triplet of eighth notes. Measure 16 has a '3' below a triplet of eighth notes.

Musical score for page 8, measures 17-32. The score continues from page 7. Measure 17 has a fermata over a whole note. Measure 20 has a '9' above a pair of eighth notes. Measure 24 has a '3' below a triplet of eighth notes. Measure 26 has a '3' below a triplet of eighth notes. Measure 28 has a '3' below a triplet of eighth notes. Measure 30 has a '3' below a triplet of eighth notes. Measure 32 has a '3' below a triplet of eighth notes. A box containing 'A17 A20 A23' is placed above measure 17.

Musical score for page 9, featuring eight staves of music in G minor. The notation includes various melodic lines with ornaments, slurs, and dynamic markings.

Musical score for page 10, featuring eight staves of music in G minor. The notation includes various melodic lines with ornaments, slurs, and dynamic markings. A trill marking (*tr*) is present on the second staff. A box at the top right contains the text "A18 A21 A24".

Musical score for page 11, featuring eight staves of music in G minor. The first staff contains a triplet of eighth notes. The music consists of various melodic lines with slurs and ties.

III B2

B3	B9	B15
----	----	-----

No. 32 Andante con moto, quasi "Allegro moderato"

Musical score for page 12, featuring eight staves of music in G minor. The music consists of various melodic lines with slurs and ties.

B4 B10 B16

Thema - Moderato

B5 B11 B17

Var. 1. Dolce con espressione

B6 B12 B18

Var. 2. Scherzando

Musical score for Var. 2. Scherzando, page 15. The score consists of eight staves of music in G minor (one flat). The music is characterized by a light, playful tempo (Scherzando) and features intricate sixteenth-note patterns, often beamed together in groups of four. The first staff begins with a repeat sign. The piece concludes with a final cadence on the eighth staff.

B7 B13 B19

Musical score for Var. 2. Scherzando, page 16. This page contains the final staff of the piece, which ends with a double bar line and repeat dots. A fermata is placed over the final note. A measure rest for 11 measures is indicated above the staff.

Var. 3. Brillante

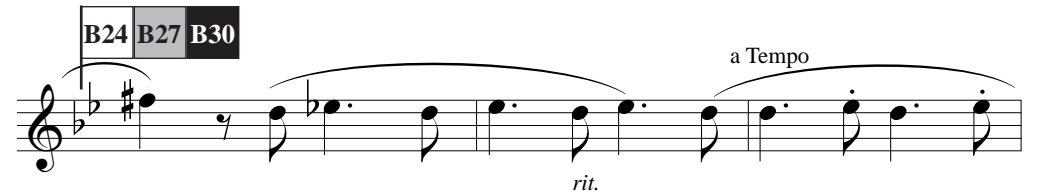
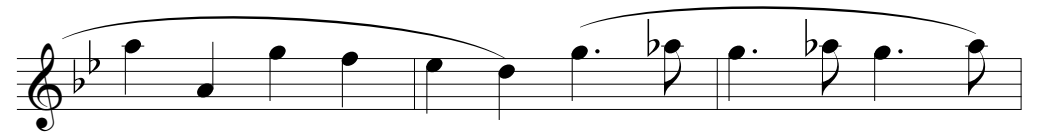
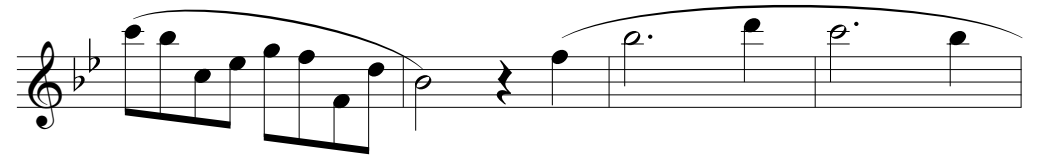
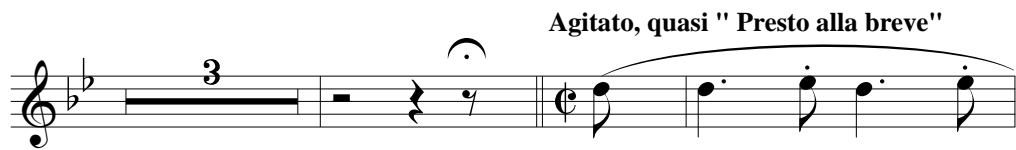
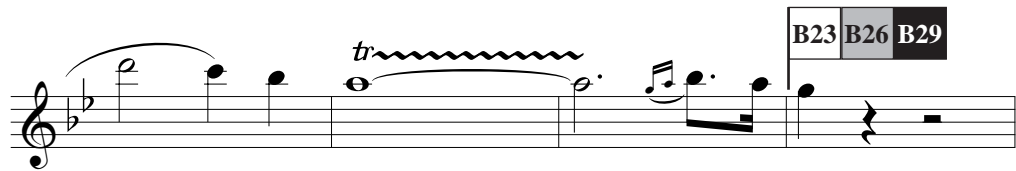
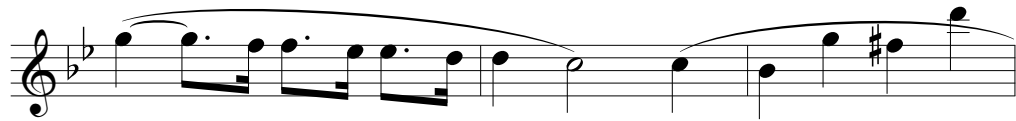
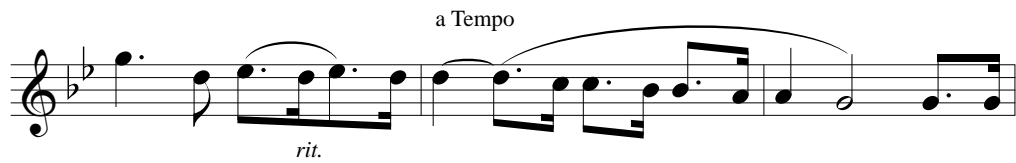
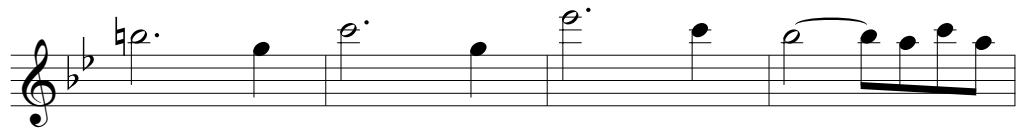
Musical score for Var. 3. Brillante, page 16. The score consists of eight staves of music in G minor (one flat). The tempo is marked 'tr' (brilliant). The music is more technically demanding than the previous variation, featuring rapid sixteenth-note passages, often with trills and grace notes. The piece concludes with a final cadence on the eighth staff.

Musical score for page 17, featuring a single melodic line in G minor. The score includes various ornaments such as trills and grace notes, and dynamic markings like *p*. A measure rest of 11 measures is indicated. A box containing the numbers **B8 B14 B20** is positioned above the staff.

IV B21

B22 B25 B28
No. 34 Adagio

Musical score for page 18, featuring a single melodic line in G minor. The score includes triplets, a trill, and a tempo change to *a Tempo*. A box containing the numbers **B22 B25 B28** is positioned above the first staff.



The image displays a musical score for Part 2 of Op. 63 by C. Baermann. The score is written in treble clef and a key signature of two flats (B-flat and E-flat). It consists of eight staves of music. The notation includes various note values, rests, and phrasing slurs. The first staff begins with a half note G4, followed by quarter notes A4, B-flat4, and C5, then a half note D5 with a sharp sign, and a quarter note E5. The second staff continues with quarter notes F5, G5, A5, and B5, followed by quarter notes C6, B5, A5, and G5. The third staff features eighth notes G5, A5, B5, and C6, followed by quarter notes D6, C6, B5, and A5. The fourth staff continues with eighth notes G5, A5, B5, and C6, followed by quarter notes D6, C6, B5, and A5. The fifth staff shows a sequence of eighth notes G5, A5, B5, C6, D6, E6, F6, G6, followed by quarter notes A6, B6, and C7. The sixth staff begins with a half note G5, followed by quarter notes A5, B5, and C6, then quarter notes D6, E6, and F6. The seventh staff continues with eighth notes G6, A6, B6, and C7, followed by quarter notes D7, C7, B6, and A6. The eighth staff concludes with a half note G6, a quarter rest, a quarter note G6, a quarter rest, a triplet of quarter notes G6, A6, and B6, a quarter rest, and a final double bar line.