

SONATINA Op. 100

G-Dur / Sol majeur / G-Major

Violin

I

A2

A. Dvorak (1841-1904)

A6 B2 B19

Allegro risoluto

1



7



13



19



26



32



38

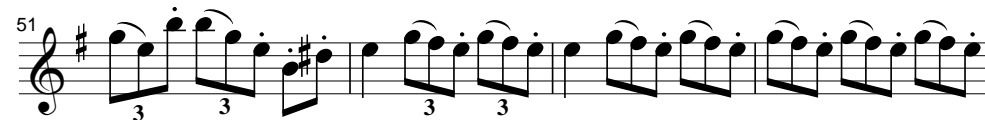


A7 B3 B20

45



51



55



60



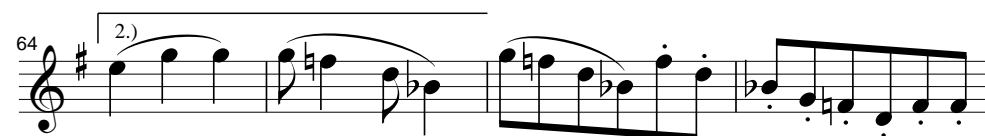
64

1.)



64

2.)



68



72



78



Musical notation for measures 78-81, featuring a treble clef, a key signature of one sharp (F#), and a 2/4 time signature. The melody consists of eighth and quarter notes with some rests.

82



Musical notation for measures 82-86, continuing the melody with eighth and quarter notes, including some slurs and ties.

87



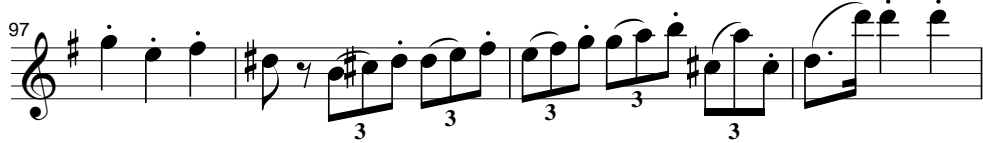
Musical notation for measures 87-91, featuring eighth and quarter notes with slurs.

92



Musical notation for measures 92-96, including eighth and quarter notes with slurs and ties.

97



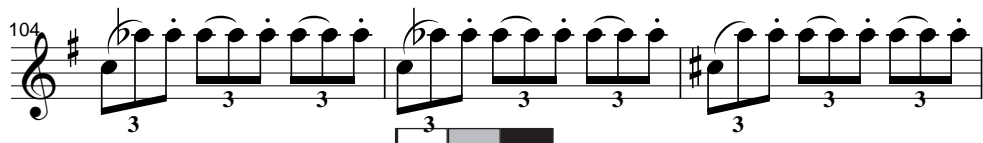
Musical notation for measures 97-100, featuring eighth notes with slurs and triplets indicated by a '3' below the notes.

101



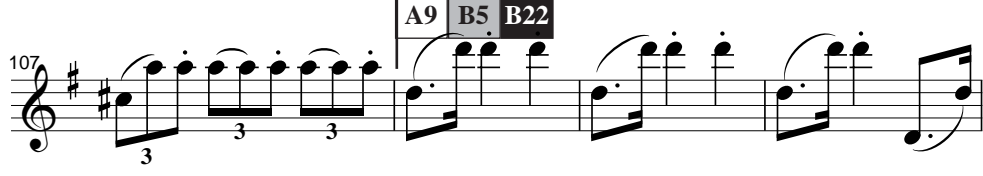
Musical notation for measures 101-103, including eighth notes with slurs and triplets.

104



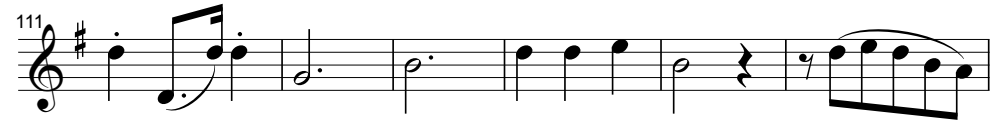
Musical notation for measures 104-106, featuring eighth notes with slurs and triplets.

107



Musical notation for measures 107-110, including eighth notes with slurs and triplets. A chord box labeled 'A9 B5 B22' is positioned above the notes in measure 108.

111



Musical notation for measures 111-116, featuring a treble clef, a key signature of one sharp (F#), and a 2/4 time signature. The melody consists of eighth and quarter notes.

117



Musical notation for measures 117-122, including eighth and quarter notes with slurs.

123



Musical notation for measures 123-128, featuring eighth and quarter notes with slurs.

129



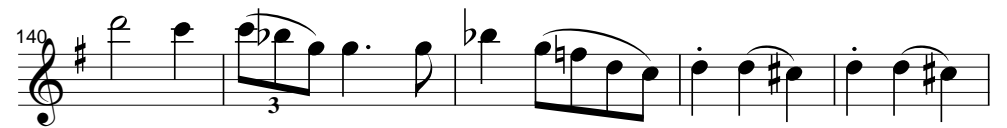
Musical notation for measures 129-134, including eighth and quarter notes with slurs.

135



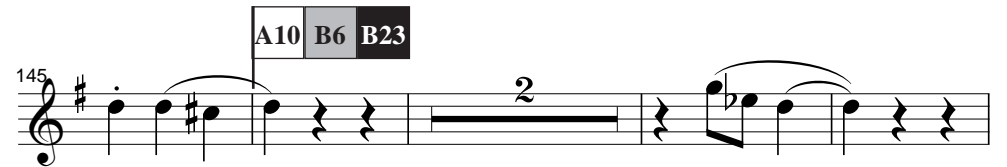
Musical notation for measures 135-139, featuring eighth and quarter notes with slurs.

140



Musical notation for measures 140-144, including eighth and quarter notes with slurs and triplets.

145



Musical notation for measures 145-150, featuring eighth and quarter notes with slurs. A chord box labeled 'A10 B6 B23' is positioned above the notes in measure 146. A fermata is placed over measures 147-148.

151



Musical notation for measures 151-156, including eighth and quarter notes with slurs and triplets.

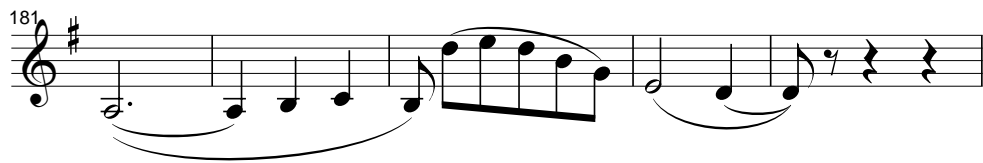
156 

161 

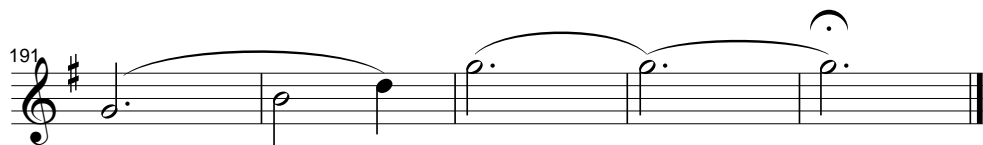
165 

169 

175 

181 

186 

191 

A11 B7 B24
Larghetto

II A3

1 

5 

9 

13 

17 

21 

25 

29

33

37

Poco più mosso

41

45

49

53

Meno mosso, Tempo I

56

61

67

73

76

79

84

A13 B9 B26

Scherzo
Molto Vivace

III

A4

1

6

11

A14 B10 B27

16

21

26

31

36

41

46

46

A15 B11 B28

51

Trio

56

62

67

71

75

80

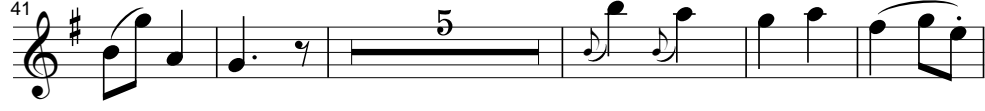
Scherzo D.C. al Fine

A16 B12 B29

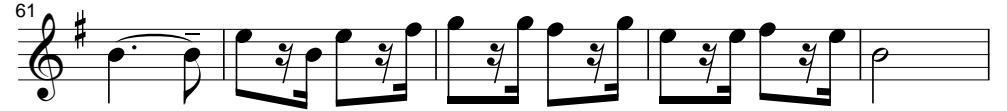
IV

A5

Finale
Allegro



A17 B13 B30



91

96

102

106

molto tranquillo

112

118

124

130

136

142

Tempo I

149

160

165

169

174

179

184

190

195

200

207

212

219

224

232

241

A20 B16 B33

247

252

256

261

266

271

276

281

286

A21 B17 B34

292

297

303

309

315

321

326

332

337

A22 B18 B35

343

349

354

360

