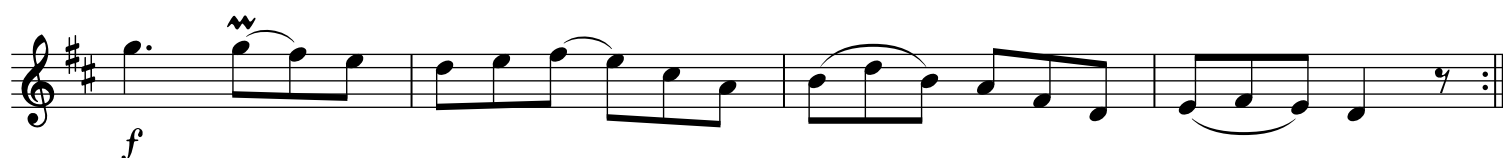
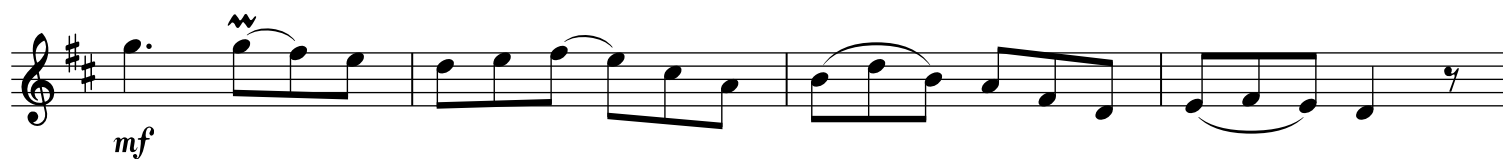
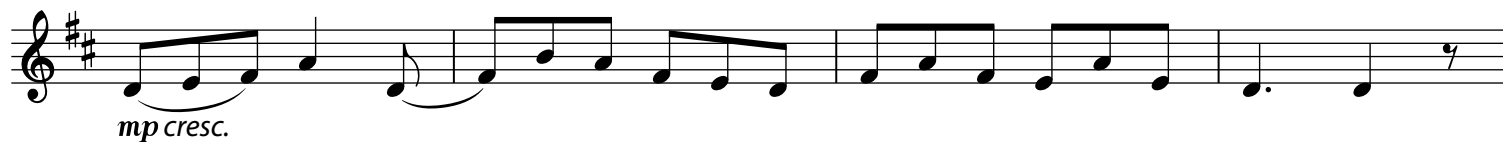
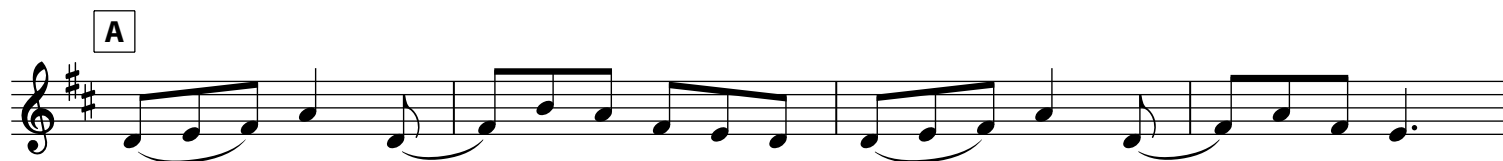
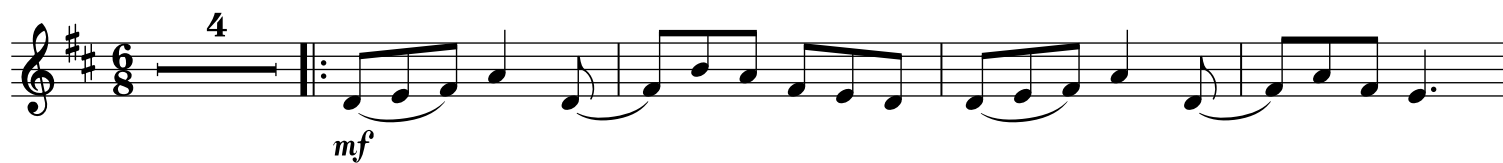




1. Dublin Time

Lively jig ♩ = 84



This tune is an Irish-style jig. Jigs are written in compound time, in this case 6/8, which means there are two dotted-crotchet beats (♩. ♩.) or two groups of three quavers (♪♪♪ ♪♪♪) per bar. Try saying 'one-and-a, two-and-a' to get the feel of the 6/8 rhythm. Watch out for the C♯ and G♯ in the second half of the piece and remember that they're played with the 2nd finger back. Irish fiddlers add a lot of ornamentation to their music, giving it a very distinctive, rhythmic character. The ornaments are usually improvised so they can be different every time the tune is played. The ornament used in this tune is called a 'Cut', indicated here by the ~ symbol (see Warm-up 1c, p. 28).

Violin accompaniment

Lively jig ♩. = 84

mf

A

mp cresc.

B
f

mf

C
f *p* *f*

mf

1. 2.