

Sonata N° 1

B^b Major

Trumpet & Piano (Organ)

Arr.: John Glenesk Mortimer

Antonio Vivaldi

EMR 323H

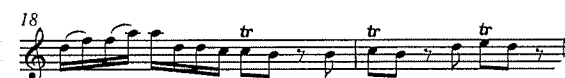
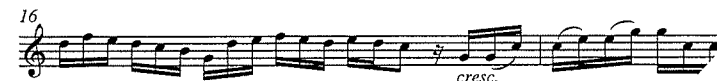
SOLO in B^b

Sonata No. I in B^b major

Antonio Vivaldi
(1678-1741)

Arr.: John Glenesk Mortimer

Largo ♩ = 90



EMR 323

© COPYRIGHT 1997 BY EDITIONS MARC REIFT CH-3963 CRANS-MONTANA (SWITZERLAND) - ALL RIGHTS RESERVED

Sonata No. I in B \flat

Antonio Vivaldi
(1678-1741)

Arr.: John Glenesk Mortimer



Largo $\text{♩} = 90$

Measures 1-2 of the first system. The score is in B-flat major, 3/8 time. The tempo is Largo with a metronome marking of 90 quarter notes per minute. The music begins with a piano (*p*) dynamic. The right hand has a melodic line with eighth notes, and the left hand has a rhythmic accompaniment of eighth notes.

Measures 3-4 of the first system. Measure 3 starts with a *legato* marking. The right hand features a triplet of eighth notes. The left hand continues with eighth notes.

Measures 5-8 of the first system. Measure 5 includes the instruction "(all trills optional)". The right hand has trills and eighth notes. The left hand has a steady eighth-note accompaniment. Dynamics include *cresc.* and *f*.

Measures 9-11 of the first system. The right hand has a melodic line with trills. The left hand has a rhythmic accompaniment. Dynamics include *mf* and *cresc.*

4

Measures 12-14 of the second system. Measure 12 starts with a *f* dynamic. The right hand has a triplet of eighth notes and a trill. The left hand has a rhythmic accompaniment.

Measures 15-17 of the second system. Measure 15 starts with a *p* dynamic. The right hand has a melodic line with eighth notes. The left hand has a rhythmic accompaniment. Dynamics include *cresc.* and *p*.

Measures 18-20 of the second system. Measure 18 starts with a *f* dynamic. The right hand has a melodic line with trills. The left hand has a rhythmic accompaniment. Dynamics include *f* and *cresc.*

Allegro $\text{♩} = 138+$

Measures 21-23 of the second system. The tempo changes to Allegro with a metronome marking of 138+ quarter notes per minute. The right hand has a melodic line with eighth notes. The left hand has a rhythmic accompaniment. Dynamics include *f*.