

Sonata N° 2

F Major

Tenor Saxophone & Piano (Organ)

Arr.: John Glenesk Mortimer

Antonio Vivaldi

EMR 324F

SOLO in Bb

Sonata No. II in F major

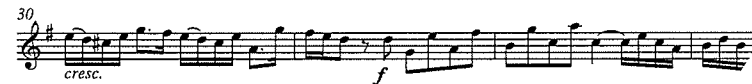
Antonio Vivaldi
(1678-1741)

Arr.: John Glenesk Mortimer

Andante $\text{♩} = \text{ca. } 80$



Allegro $\text{♩} = 100$



EMR 324

© COPYRIGHT 1998 BY EDITIONS MARC REIFT CH-3963 CRANS-MONTANA (SWITZERLAND) - ALL RIGHTS RESERVED

Sonata No. II in F major

Antonio Vivaldi
(1678-1741)
Arr.: John Glenesk Mortimer



Andante ♩ = ca. 80

Measures 1-6 of the first system. The music is in 3/8 time, F major, and begins with a piano (*p*) dynamic. The right hand features a melodic line with eighth notes, while the left hand provides a rhythmic accompaniment of chords.

Measures 7-14 of the first system. The music continues with dynamic markings of *f* and *p sub.* (piano subito). The melodic line in the right hand shows some ornamentation and a change in texture.

Measures 15-21 of the first system. This section includes a trill (*tr*) and dynamic markings of *f* and *p*. The right hand has a more active melodic line, and the left hand continues with chordal accompaniment.

Measures 22-27 of the first system. The music features a crescendo (*cresc.*) and a piano (*p*) dynamic. The right hand has a melodic line with some grace notes, and the left hand has a rhythmic accompaniment.

4

Measures 28-32 of the second system. The music continues with dynamic markings of *f* and *p*. The right hand has a melodic line with some grace notes, and the left hand has a rhythmic accompaniment.

Measures 33-40 of the second system. The music features dynamic markings of *f* and *p*. The right hand has a melodic line with some grace notes, and the left hand has a rhythmic accompaniment.

Allegro ♩ = 100

Measures 41-46 of the second system. The music is in 3/8 time, F major, and begins with a forte (*f*) dynamic. The right hand has a melodic line with eighth notes, and the left hand has a rhythmic accompaniment.

Measures 47-50 of the second system. The music features a piano (*p*) dynamic and a crescendo (*cresc.*). The right hand has a melodic line with some grace notes, and the left hand has a rhythmic accompaniment.