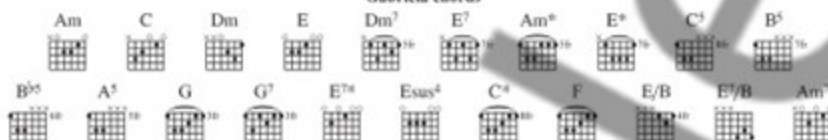


# diablo rojo

Music by Rodrigo Sanchez & Gabriela Quintero

## Gabriela chords



$\text{♩} = 132$   
N.C.

Gabriela

Rodrigo

TAB

\* notation for percussive playing:

- hit on body of guitar
- hit on strings (either at bridge or end of fretboard)

TAB

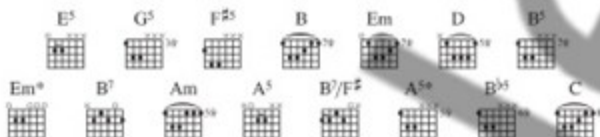
N.C.

TAB

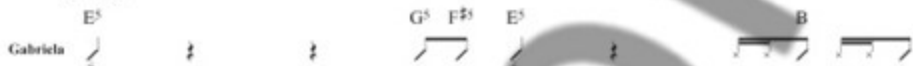
TAB

# hanuman

Music by Rodrigo Sanchez & Gabriela Quintero



♩ = 128



Rodrigo

*mf*

TAB: 7 X X 5 7 X 5 X 7 10 9 | 7 X X 5 7 X 5 X 7 X X 9

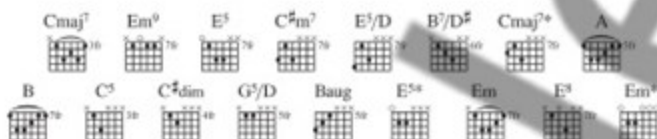
TAB: 7 X X 5 7 X 5 X 7 10 9 | 7 X 5 X X X 5 X 5 X 4

TAB: 7 X X 5 7 X 5 X 7 10 9 | 7 X X 5 7 X 5 X 7 X X 7 | 7 X X 5 7 X 5 X 7 10 9

TAB: 9 X 7 X X X 5 X X 5 | X X 4 | 2 (10)

# the russian messenger

Music by Rodrigo Sanchez & Gabriela Quintero



$\text{♩} = 147$

Rodrigo

(Em)

Musical score for Rodrigo, starting with a *mf* dynamic. The score includes a treble clef staff with a key signature of one sharp (F#) and a 3/4 time signature. Below the staff are two TAB lines labeled 'T' and 'A' and 'B'. The guitar part features a sequence of chords: Em, C<sup>5</sup>, C<sup>#</sup>dim, G<sup>7</sup>/D, Baug, E<sup>5</sup><sup>+</sup>, Em, E<sup>5</sup>, and Em<sup>+</sup>. The notation includes various rhythmic values and articulations.

Gabriela

Musical score for Gabriela, starting with a *mf* dynamic and a *Ham.* (Hammer-on) instruction. The score includes a treble clef staff with a key signature of one sharp (F#) and a 3/4 time signature. Below the staff are two TAB lines labeled 'T' and 'A' and 'B'. The guitar part features a sequence of chords: Cmaj7, C<sup>5</sup>, C<sup>#</sup>dim, G<sup>7</sup>/D, Baug, E<sup>5</sup><sup>+</sup>, Em, E<sup>5</sup>, and Em<sup>+</sup>. The notation includes various rhythmic values and articulations.

Musical score for Rodrigo and Gabriela, continuing from the previous section. The score includes a treble clef staff with a key signature of one sharp (F#) and a 3/4 time signature. Below the staff are two TAB lines labeled 'T' and 'A' and 'B'. The guitar part features a sequence of chords: Cmaj7, C<sup>5</sup>, C<sup>#</sup>dim, G<sup>7</sup>/D, Baug, E<sup>5</sup><sup>+</sup>, Em, E<sup>5</sup>, and Em<sup>+</sup>. The notation includes various rhythmic values and articulations.