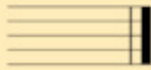
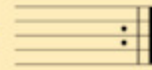


Double Bar



indicates the end of a piece of music.

Repeat Sign

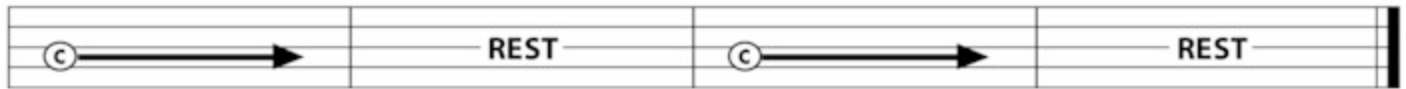


Without stopping, play once again from the beginning.

7. THE LONG HAUL

Double Bar ▾

C



6

8. FOUR BY FOUR

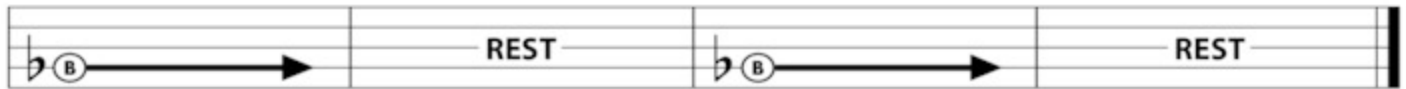
Repeat Sign ▾



Count & Tap: 1 & 2 & 3 & 4 & 1 & 2 & 3 & 4 & 1 & 2 & 3 & 4 & 1 & 2 & 3 & 4 &

9. TOUCHDOWN

B_b



1

10. THE FAB FIVE



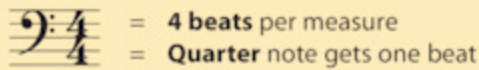
1 & 2 & 3 & 4 & 1 & 2 & 3 & 4 & 1 & 2 & 3 & 4 & 1 & 2 & 3 & 4 &

Bass Clef

(F Clef) indicates the position of note names on a music staff: Fourth line is F.

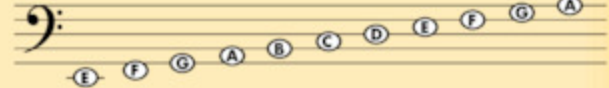
Time Signature

indicates how many beats per measure and what kind of note gets one beat.



Note Names

Each note is on a line or space of the staff. These note names are indicated by the Bass Clef.



THEORY

Sharp

raises the note and remains in effect for the entire measure.

Flat

b lowers the note and remains in effect for the entire measure.

Natural

∅ cancels a flat (b) or sharp (#) and remains in effect for the entire measure.

11. READING THE NOTES

Compare this to exercise 10, THE FAB FIVE.



1 & 2 & 3 & 4 & 1 & 2 & 3 & 4 & 1 & 2 & 3 & 4 & 1 & 2 & 3 & 4 &

12. FIRST FLIGHT



13. ESSENTIAL ELEMENTS QUIZ

Fill in the remaining note names before playing.



B_b C D _ _ _ _ _ _ _ _ _ _

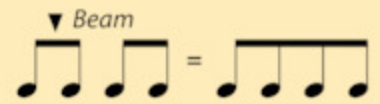
Eighth Notes



Each Eighth Note = $\frac{1}{2}$ Beat
2 Eighth Notes = 1 Beat
Play on down and up taps.



Two or more Eighth Notes have a *beam* across the stems.



40. RHYTHM RAP *Clap the rhythm while counting and tapping.*

Clap

1 & 2 & 3 & 4 & 1 & 2 & 3 & 4 & 1 & 2 & 3 & 4 & 1 & 2 & 3 & 4 &

41. EIGHTH NOTE JAM

1 & 2 & 3 & 4 & 1 & 2 & 3 & 4 & 1 & 2 & 3 & 4 & 1 & 2 & 3 & 4 &

42. SKIP TO MY LOU

American Folk Song

mf

43. LONG, LONG AGO *Good posture improves your sound. Always sit straight and tall.*

p

44. OH, SUSANNA

Stephen Collins Foster

f

HISTORY

Italian composer **Gioacchino Rossini** (1792–1868) began composing as a teenager and was very proficient on the piano, viola and horn. He wrote “William Tell” at age 37 as the last of his forty operas, and its familiar theme is still heard today on radio and television.

45. ESSENTIAL ELEMENTS QUIZ — WILLIAM TELL

Gioacchino Rossini

mf

f

PERFORMANCE SPOTLIGHT

55. WHEN THE SAINTS GO MARCHING IN - Band Arrangement

Arr. by John Higgins

Allegro

3 Measure number

mf

11

19

Detailed description: This musical score is for the bass clef of 'When the Saints Go Marching In'. It is in 4/4 time and B-flat major. The tempo is Allegro. The score consists of three staves. The first staff starts with a rest for 3 measures, then begins with a mezzo-forte (*mf*) dynamic. The second staff has a crescendo leading to a forte (*f*) dynamic at measure 11. The third staff continues the melody, ending at measure 19.

56. OLD MACDONALD HAD A BAND - Section Feature

Allegro

mf

9

2nd time go on to meas. 13

f

p

13

f

Detailed description: This musical score is for the bass clef of 'Old MacDonald Had a Band'. It is in 4/4 time and B-flat major. The tempo is Allegro. The score consists of three staves. The first staff starts with a mezzo-forte (*mf*) dynamic. The second staff has a crescendo leading to a forte (*f*) dynamic at measure 9, followed by a piano (*p*) dynamic. A repeat sign is present, with a note to '2nd time go on to meas. 13'. The third staff starts at measure 13 with a forte (*f*) dynamic.

57. ODE TO JOY (from Symphony No. 9)

Ludwig van Beethoven

Arr. by John Higgins

Moderato

mf

9

13

p

f

Detailed description: This musical score is for the bass clef of 'Ode to Joy' from Beethoven's Symphony No. 9. It is in 4/4 time and B-flat major. The tempo is Moderato. The score consists of three staves. The first staff starts with a mezzo-forte (*mf*) dynamic. The second staff has a piano (*p*) dynamic at measure 9, followed by a crescendo leading to a forte (*f*) dynamic at measure 13. The third staff continues the melody, ending with a fermata over the final note.

58. HARD ROCK BLUES - Encore

John Higgins

Allegro

f

Detailed description: This musical score is for the bass clef of 'Hard Rock Blues'. It is in 4/4 time and B-flat major. The tempo is Allegro. The score consists of two staves. The first staff starts with a forte (*f*) dynamic. The second staff continues the melody, ending with a repeat sign.

RUBANK® SCALE AND ARPEGGIO STUDIES

KEY OF F *In this key signature, play all B♭'s.*

1.



2.



 **RHYTHM STUDIES**