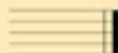
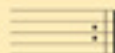


Double Bar

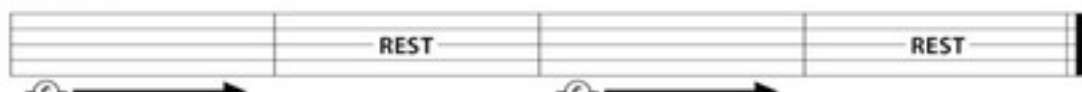
indicates the end of a piece of music.

Repeat Sign

Without stopping, play once again from the beginning.

7. THE LONG HAUL

Double Bar ▾

D**8. FOUR BY FOUR****9. TOUCHDOWN****C****10. THE FAB FIVE****Treble Clef**

(G Clef)
indicates the position of note names on a music staff: Second line is G.

**Time Signature**

indicates how many beats per measure and what kind of note gets one beat.

= 4 beats per measure
= Quarter note gets one beat

Note Names

Each note is on a line or space of the staff. These note names are indicated by the Treble Clef.

**Sharp**

raises the note and remains in effect for the entire measure.

Flat

lowers the note and remains in effect for the entire measure.

Natural

cancels a flat (b) or sharp (#) and remains in effect for the entire measure.

THEORY

11. READING THE NOTES Compare this to exercise 10, THE FAB FIVE.**12. FIRST FLIGHT****13. ESSENTIAL ELEMENTS QUIZ** Fill in the remaining note names before playing.