

SELECTING YOUR BASS

Bass guitars come in three sizes:

And they come in various body shapes:



Full size



3/4 size



1/2 size



"P-bass" style
(Precision
Bass)



Jazz bass
style



Violin
style

The P-bass and Jazz bass styles are the most common, and most of the bass guitars you see are based on these shapes. Choose a bass that best fits you.



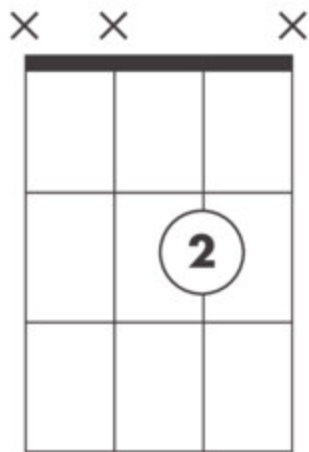
Too Big



Good Fit

THE NOTE E (2ND STRING)

The 2nd fret on the 2nd string is the note E. Play this note with your second finger.



You've already learned another E note. Remember? It's the open 4th string. We say that this E on the 2nd string is an **octave** above the lower one. Play them one after the other to hear how they sound similar. One is just higher than the other.

You'll play both E notes in "Blues Riff."

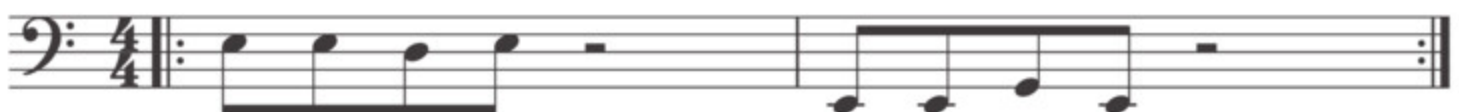
BLUES RIFF



A **half note rest** (—) means to be silent for two beats.

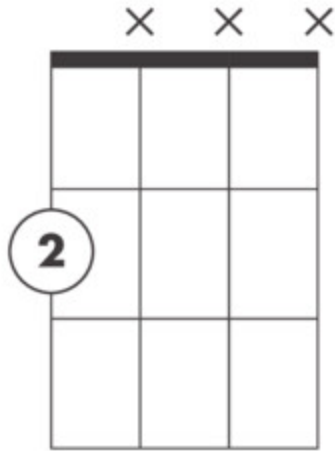


E-Z GROOVE



THE NOTE F#

Sharp (#) and flat (b) notes are called **accidentals**. A sharp note is one fret higher than a normal note, and a flat note is one fret lower. The note F# is found at the 2nd fret of the 4th string—one fret higher than the note F.



When we want to return a note back to normal (not sharp or flat), we use a **natural sign** (♮). We'll see this in our next song, so watch out for it!

CHICAGO GROOVE



A5 G5 D/F# F5 E5 A5

CRAZY TRAIN



Intro

D5 E A

Words and Music by Ozzy Osbourne, Randy Rhoads and Bob Daisley
 Copyright © 1981 Blizzard Music Limited, 12 Thayer Street, London, W1M 5LD, England
 International Copyright Secured All Rights Reserved

TEACHER ACCOMPANIMENT:

Play 3 times

D5 E A