

# AIN'T NO MOUNTAIN HIGH ENOUGH

GUITAR

Words and Music by  
NICKOLAS ASHFORD and VALERIE SIMPSON  
Arranged by JOHN BERRY

(UNISON PATTERN)



(LIGHT ROCK)

Chord progression for the Light Rock style:

1. Cmi Cmi/Bb 2. Ami7(b5) 3. Abma7 4. Gmi7 5. Fmi7 6. Ami7(b5)

7. Cmi Cmi/Bb 8. Ami7(b5) 9. Abma7 10. Gmi7 11. Fmi7 12. Ami7(b5) 13. Cmi Cmi/Bb 14. Ami7(b5)

15. (Ami7(b5)) 16. Abma7 17. Gmi7 18. Fmi7 19. Ami7(b5) 20. Cmi Cmi/Bb 21. Ami7(b5)

22. Abma7 23. Gmi7 24. Fmi7 25. Abma7 26. Ab6 27. Fmi7 28. Gmi7 29. Cmi7 30. Ab6 31. Fmi7 32. Gmi7

33. (Gmi7) 34. Cmi7 35. Ab6 36. Fmi7 37. Gmi7 38. Cmi7 39. F 40. Ab6

41. (25) Cmi Cmi/Bb 42. Ami7(b5) 43. Abma7 44. Gmi7 45. Fmi7 46. Ami7(b5) 47. Cmi Cmi/Bb 48. Ami7(b5)

49. (Ami7(b5)) 50. Abma7 51. Gmi7 52. Fmi7 53. Abma7 54. Ab6 55. Fmi7 56. Gmi7 57. Cmi7

Copyright © 1967 Jobete Music Co., Inc.

Copyright Renewed

This arrangement Copyright © 2009 Jobete Music Co., Inc.

All Rights Administered by Sony Music Publishing LLC, 424 Church Street, Suite 1200, Nashville, TN 37219

International Copyright Secured All Rights Reserved

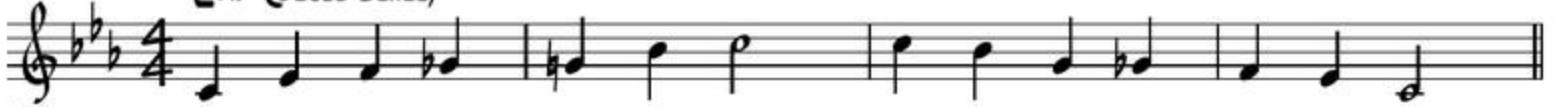
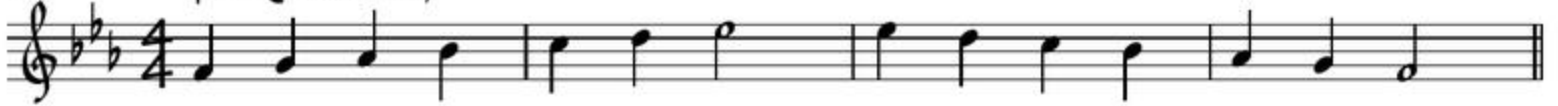
# BLUE 'N' MOODY

By MICHAEL SWEENEY

## GUITAR

**(UNISON PATTERNS)****(A)** (SWING) (♩ =  $\overset{3}{\text{J}}\text{J}$ )

Cmi7 (BLUES SCALE)

**(B)** Fmi7 (DORIAN MODE)(SWING) (♩ =  $\overset{3}{\text{J}}\text{J}$ )

Cmi7

F/C

Cmi7

(Cmi7) *mf*

1.

2.

**(11)** (WITH SAXES)

Fmi7 Bb/F

Fmi7

Bb/F

Fmi7



(Fmi7)

Dmi7(b5)

G7

**(19)**

Cmi7

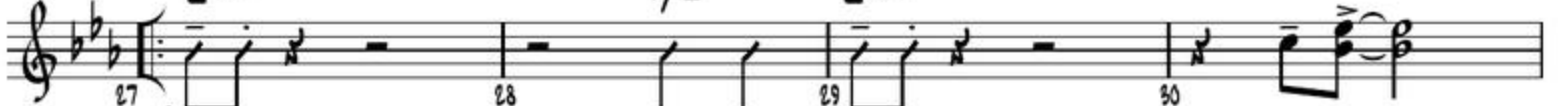
TO CODA

**(27)** (SOLO FOR ANY INSTRUMENT (AD LIB. OR USE SAMPLE SOLO))

Cmi7

F/C

Cmi7

*mp*

Cmi7

F/C

Cmi7



Recorded by EUROPE

**FINAL COUNTDOWN**

GUITAR

**(UNISON PATTERNS)**Words and Music by JOEY TEMPEST  
Arranged by JOHN BERRY**(A)** **(ROCK)****(ROCK)****(DEADEN)**  
N.C.**(24)**