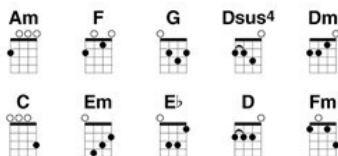


Let It Go

from FROZEN

Music and Lyrics by Kristen Anderson-Lopez and Robert Lopez



To match original recording, place capo on 8th fret

Verse 1

Am F
The snow glows white on the mountain tonight;
G Dsus4 Dm
Not a footprint to be seen.
Am F
A kingdom of iso-la-tion,
G Dsus4 D
And it looks like I'm the queen.
Am F G Dsus4 Dm
The wind is howling like this swirling storm inside.
Am G D
Couldn't keep it in; heaven knows I tried.

Pre-Chorus 1

G Don't let them in, don't let them see.
F Be the good girl you always have to be.
G Conceal, don't feel, don't let them know... F

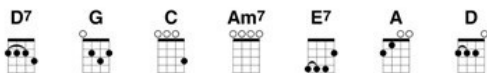
Well, now they know.

Un Poco Loco

from COCO

Music by Germaine Franco

Lyrics by Adrian Molina



Verse 1

D7 **G** **D7** **G**
What color is the sky? Ay mi amor, ay mi amor.

D7 **G** **D7** **G**
You tell me that it's red. Ay Ay mi amor, ay mi amor.

D7 **G** **D7** **G**
Where should I put my shoes? Ay mi amor, ay mi amor.

D7 **G** **D7** **G**
You say, "Put them on your head!" Ay mi amor, ay mi amor.

Chorus 1

N.C. **C** **D7** **G**
You make me un poco loco, un poquitito loco.

C **D7** **G**
The way you keep me guessing, I'm nodding and I'm yessing.

D7
I'll count it as a blessing

Am7 **D7** **G**
That I'm only un poco loco.

Instru

||: D7 | | **G** | | **:||**

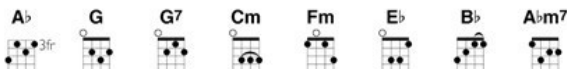
E7 | | |

Play 6 times

We Don't Talk About Bruno

from ENCANTO

Music and Lyrics by Lin-Manuel Miranda



Intro

A♭ G
We don't talk about Bruno, no, no, no!
A♭ G7
We don't talk about Bruno...

Verse 1

Cm Fm
But, it was my wedding day. *(It was our wedding day...)*
G Fm
We were getting ready, and there
Cm Fm
Wasn't a cloud in the sky.
G Fm
(No clouds allowed in the sky)
Cm Fm G Fm
Bruno walks in with a mis-chie-vous grin *(Thunder!!)*
A♭ G7
—You telling this story or am I? *(I'm sorry, mi vida, go on...)*
Cm Fm G Fm
Bruno says, "It looks like rain." *(Why did he tell us?)*
Cm Fm G
In doing so, he floods my brain.
Fm
(Abuela, get the um-brel-las)
Cm Fm G
Married in a hurricane...
Fm
(What a joyous day but anyway...)